

Laboratory Setup

4/6/2009

Rack Setup - Work Area

Patch Panel

Cisco Switch
2900

Cisco Switch
4000/7000

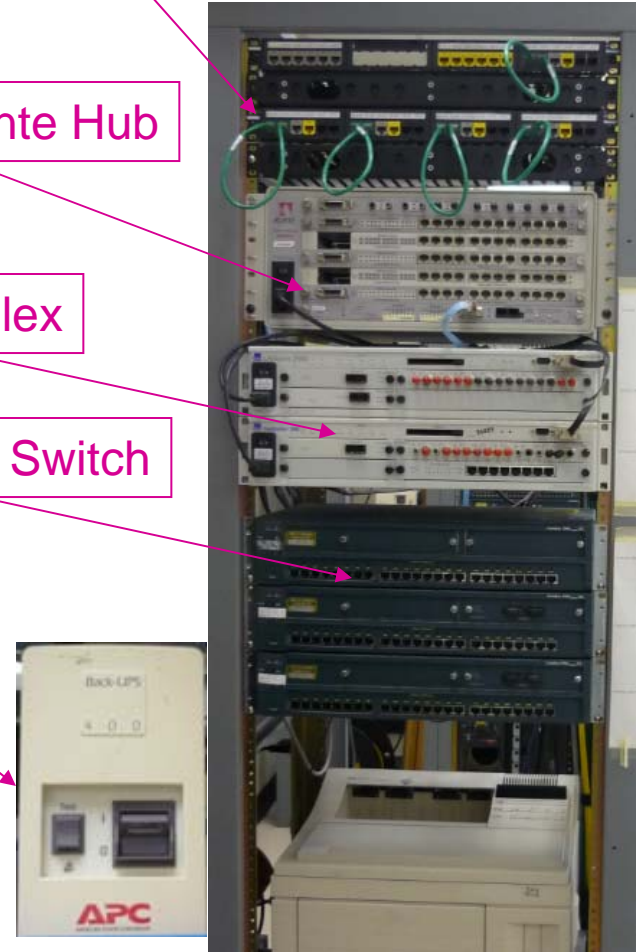
Cisco Switch
4000/7000

Asante Hub

LANPlex

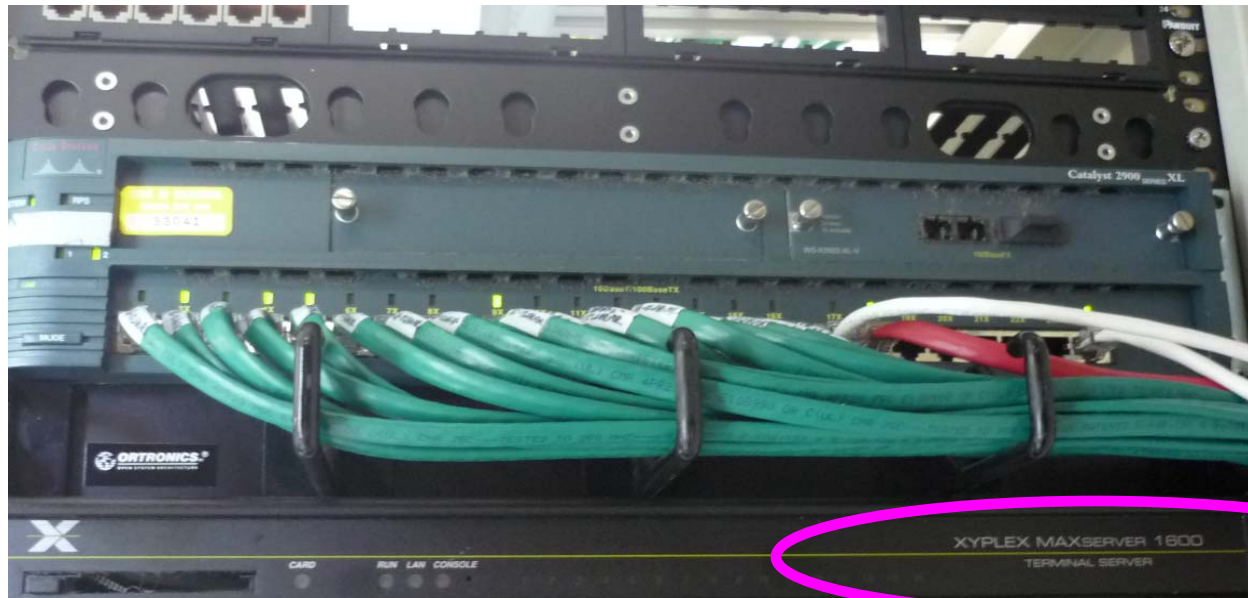
Cisco Switch

UPS



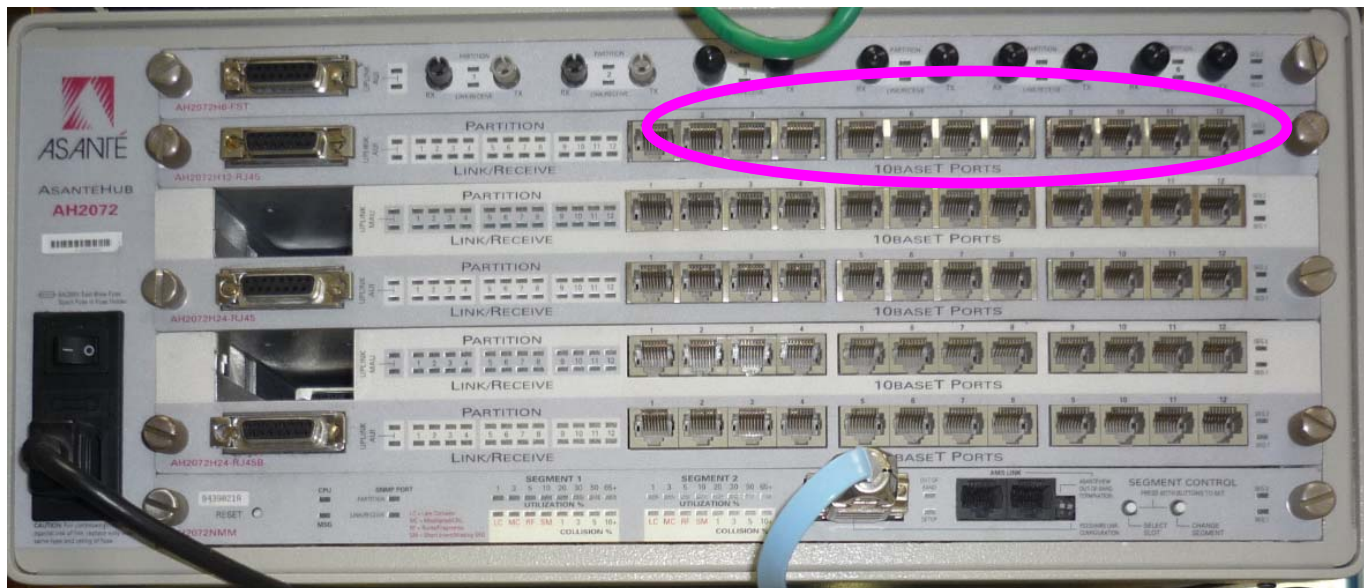
XYPLEX Server

- ❑ Located at the end of the room; interfaced to a PC
- ❑ One for each side



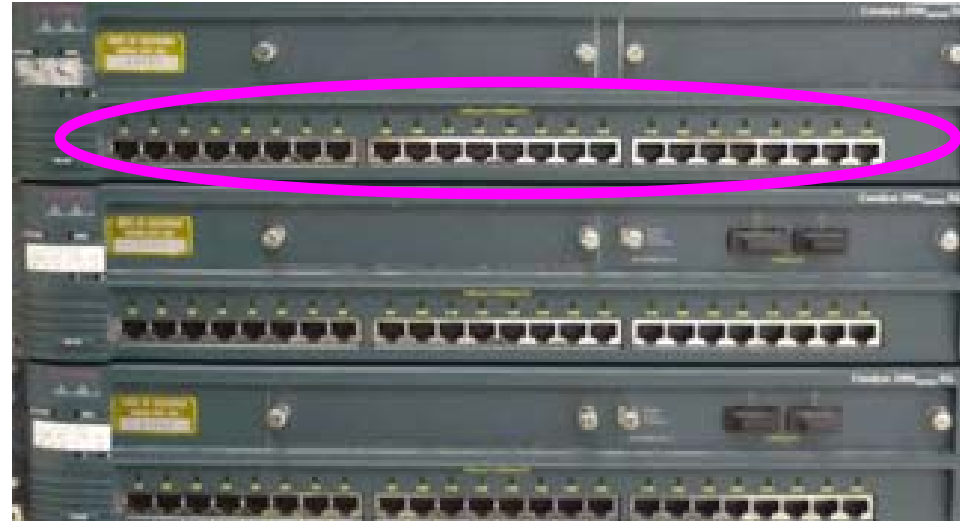
Hub

- ❑ Make sure the lights led up when you plug-in a cable
- ❑ 12 10BaseT ports

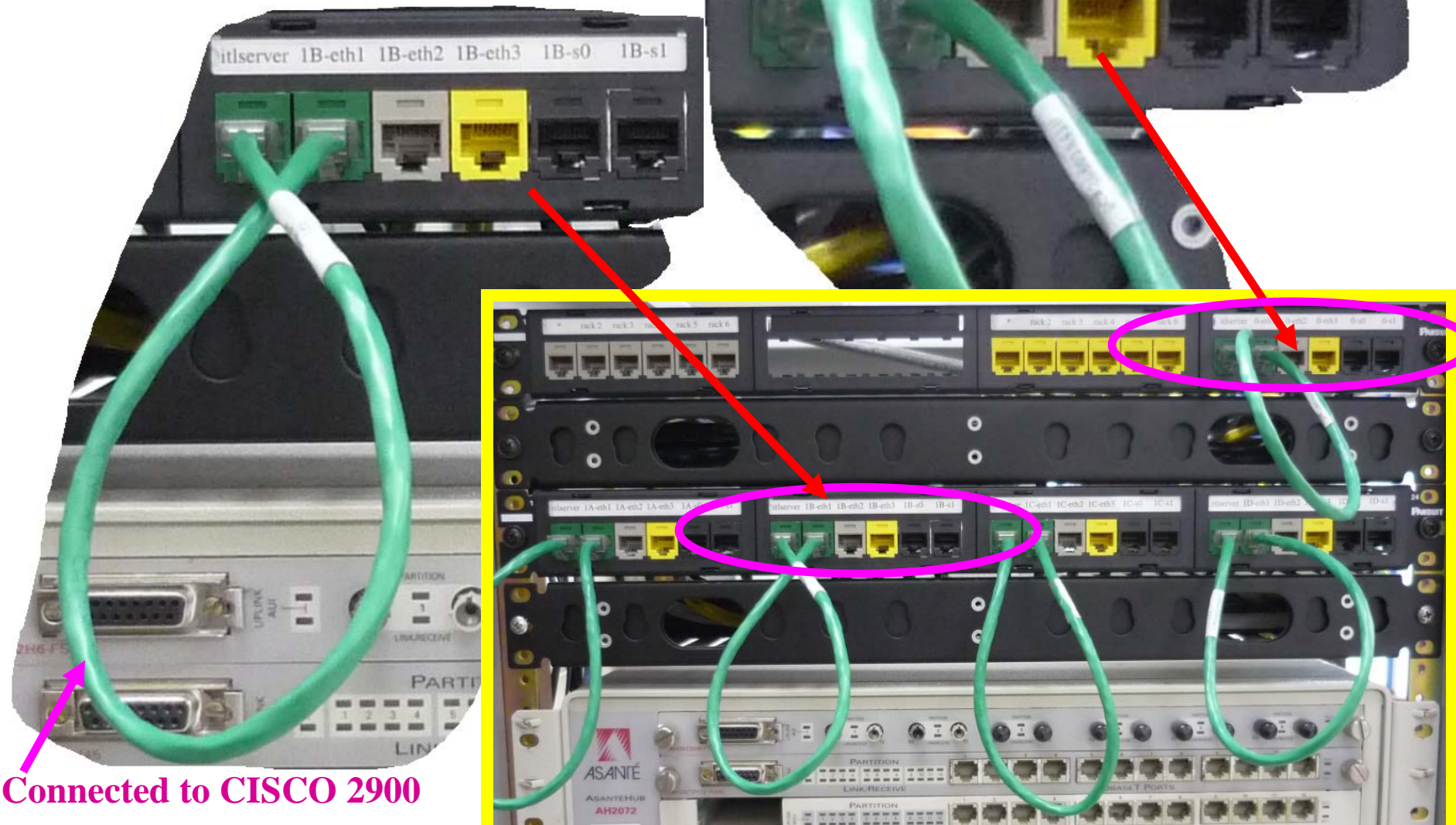


Switch Cisco 2900

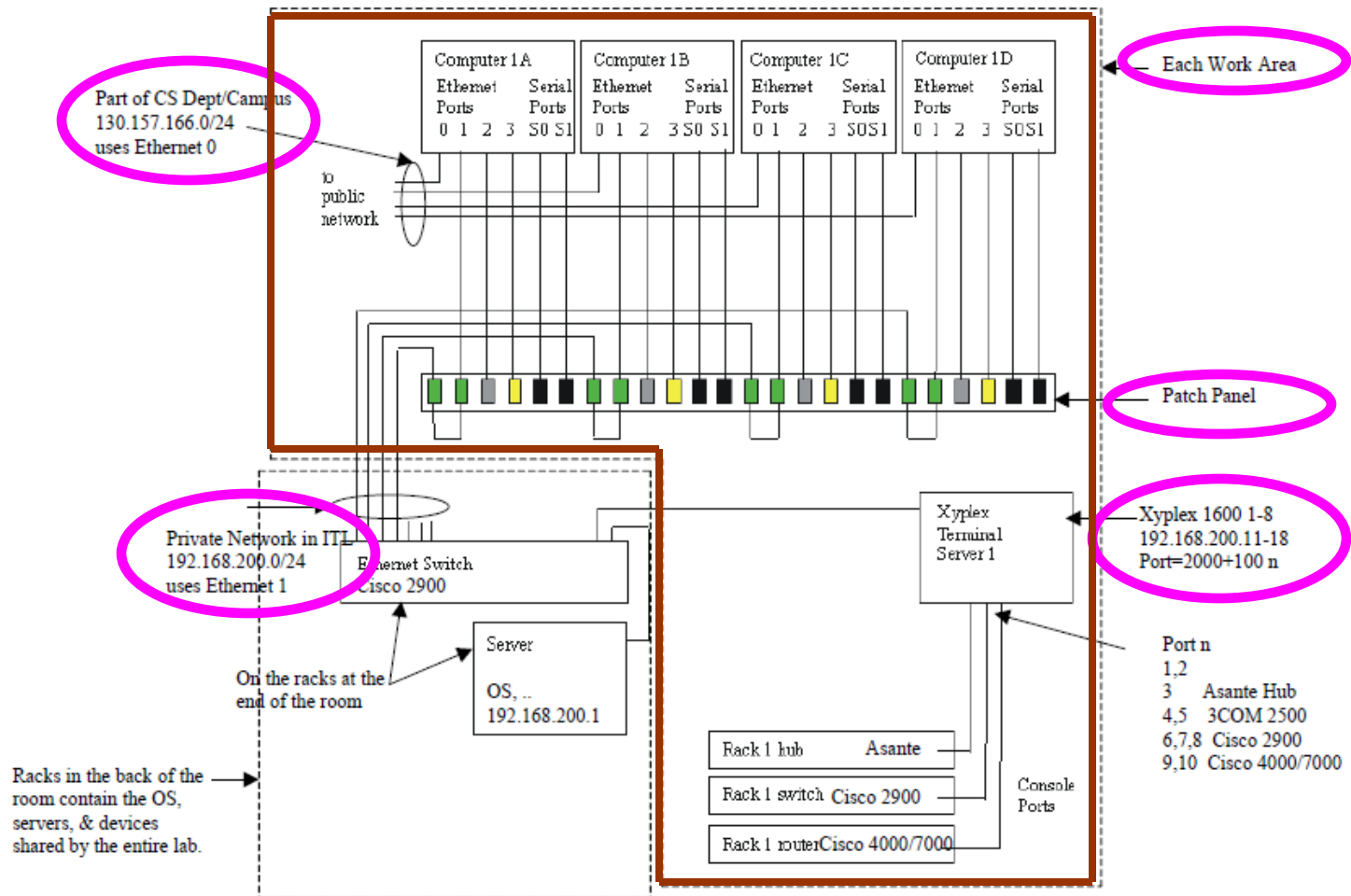
- ❑ Make sure the lights led up when you plug-in a cable
- ❑ 24 10BaseT/100BaseT ports on each switch



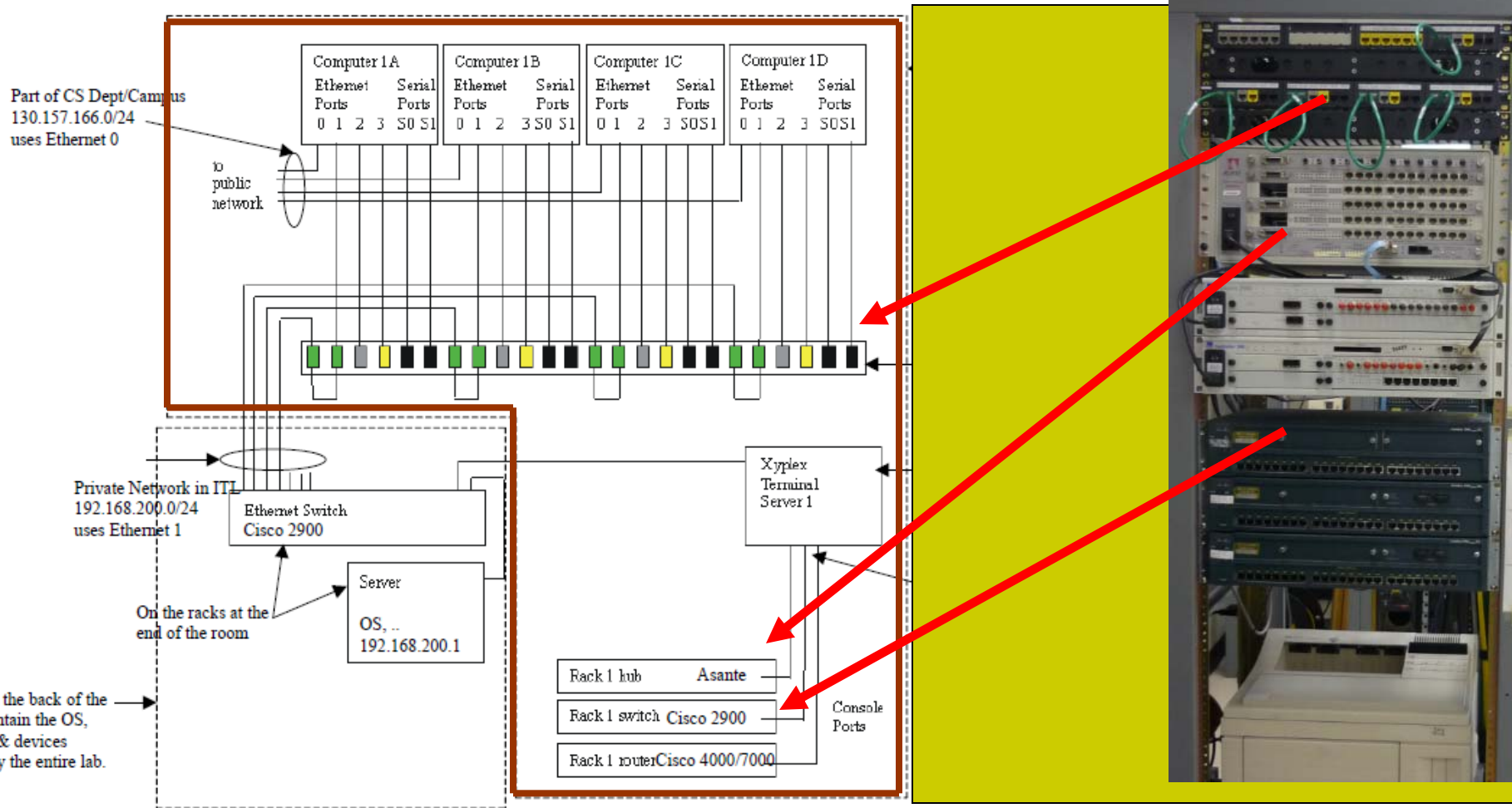
Patch Panel



Logical Connections



Logical Connections



Station Addressing

- 6 work areas (racks)
- 4 stations per rack
- Addressing: 192.168.0.xx
 - For work area **1**:
 - **1a** = **1**x16+**10**=**26**
 - **1b** = **1**x16+**11**=**27**
 - **1c** = **1**x16+**12**=**28**
 - **1d** = **1**x16+**13**=**29**

